

34. Gedde SJ, Herndon LW, Brandt JD, et al. Postoperative complications in the Tube Versus Trabeculectomy (TVT) study during five years of follow-up. *Am J Ophthalmol*. 2012;153(5):804–814.e801.
35. Physician Specialty Data Report—Executive Summary, 2016 Edition, AAMC: 2016.
36. Merritt, Hawkins. *A Survey of America's Physicians: Practice Patterns and Perspectives*, The Physicians Foundation. Association of American Medical Colleges; 2012; http://www.physiciansfoundation.org/uploads/default/Physicians_Foundation_2012_Biennial_Survey.pdf. Accessed May 2017.
37. Adams MA, Parikh PD, Miller K, Rubenstein JH. Medical professional liability claims related to esophageal cancer screening. *JAMA*. 2014;312(13):1348–1349.
38. Mangalmurti S, Seabury SA, Chandra A, et al. Medical professional liability risk among US cardiologists. *Am Heart J*. 2014;167(5):690–696.

Footnotes and Financial Disclosures

Originally received: June 24, 2017.

Final revision: October 25, 2017.

Accepted: November 8, 2017.

Available online: January 15, 2018. Manuscript no. 2017-1453.

¹ Department of Ophthalmology, Duke University Medical Center, Durham, North Carolina.

² Physician Insurers Association of America, Rockville, Maryland.

Financial Disclosure(s):

The author(s) have no proprietary or commercial interest in any materials discussed in this article.

HUMAN SUBJECTS: Human subjects were included in this study. Institutional review board approval was obtained from Duke University Medical Center. The study complied with the Health Insurance Portability and Accountability Act and adhered to the tenets of the Declaration of Helsinki.

Author Contributions:

Conception and design: Thompson, Parikh, Lad

Analysis and interpretation: Thompson, Parikh

Data collection: Thompson, Parikh

Obtained funding: none

Overall responsibility: Thompson, Parikh, Lad

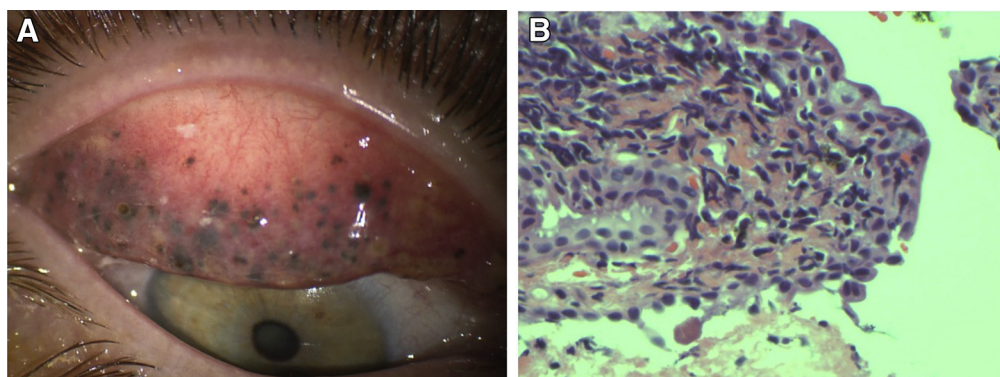
Abbreviations and Acronyms:

AAMC = Association of American Medical Colleges; **ADR** = Alternative Dispute Resolution; **ALAE** = allocated loss adjustment expenses; **DSP** = Data Sharing Project; **GDD** = glaucoma drainage device; **MIGS** = Minimally Invasive Glaucoma Surgery; **MPL** = medical professional liability; **OMIC** = Ophthalmic Mutual Insurance Company; **PIAA** = Physician Insurers Association of America; **ROP** = retinopathy of prematurity.

Correspondence:

Atalie C. Thompson, MD, MPH, Department of Ophthalmology, Duke University Medical Center, 2351 Erwin Road, Hudson Room 4527, Durham, NC 27705. E-mail: ataliethompson@gmail.com.

Pictures & Perspectives



Subconjunctival Mascara Deposition

A 50-year-old woman presented with chronic foreign body sensation in both eyes. She admitted to more than 25 years of heavy mascara use on her lashes with inadequate removal. Eversion of the upper lids revealed multiple darkly pigmented subconjunctival concretions, some eroding through the conjunctival surface (Fig 1A). This was associated with a patchy follicular conjunctivitis and punctate corneal erosions. Histopathological examination of a conjunctival biopsy revealed a chronic inflammatory infiltrate with pigmented macrophages, in keeping with foreign body deposition (Fig 1B).

DANA ROBAEI, PhD, FRANZCO^{1,2}

¹Save Sight Institute, University of Sydney, Australia; ²Westmead Hospital, Department of Ophthalmology, Sydney, Australia